



Counter House, Chelsea Creek
Fulham SW6

GARTON JONES.COM



Counter House, Chelsea Creek Fulham, SW6

GARTON JONES.COM

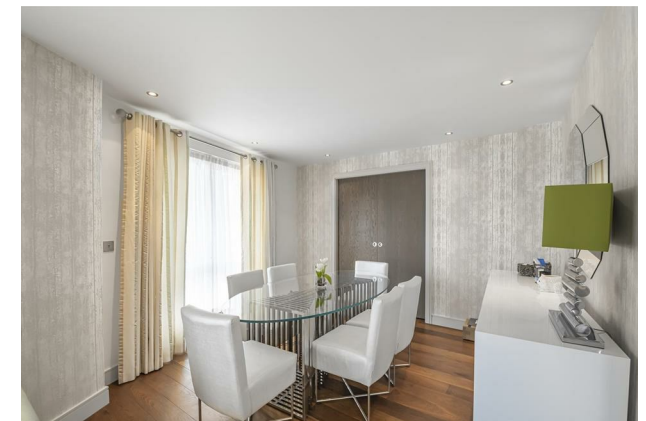
13 Park Street
Chelsea Creek
London
SW6 2FS

Sales +44 (0) 20 7824 7090
paul@gartonjones.com
www.gartonjones.com

£1,850,000 Leasehold

Beautifully reconfigured by Berkeley Homes from two original units, this spacious four-bedroom apartment offers 1,857sqft (172 sqm) of refined living on the second floor of Counter House. Featuring a striking curved reception room with balcony, modern kitchen, and flexible layout including a principal suite with balcony and dressing room/study, two further ensuites, a family bathroom, and guest cloakroom. Thoughtfully designed for versatile family living in a prestigious setting. Development features include, 24-hour concierge, residents' gym, indoor pool, spa & sauna, landscaped communal gardens.

- Originally Two Apartments Converted into An Impressive Family Apartment
- 1875sqft (172sqm)
- Four Bedrooms
- Dressing Room or further bedroom/ study
- Two ensuites
- Spacious Reception Ideal for entertaining
- 2nd Floor with lift
- Two balconies
- Residents Gym, Indoor Pool & sauna
- 24 Hour Concierge



Leasehold 999 from 2010

Service Charge — TBC

Ground Rent TBC

Hammersmith & Fulham Council - Band H

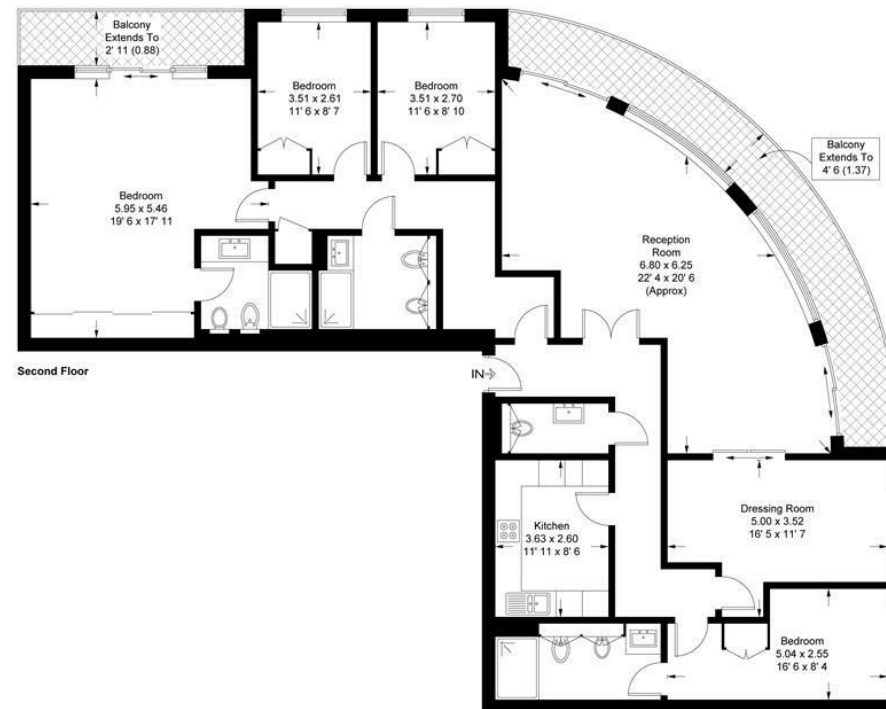
EPC - C

EPC certificate available on request.

Counter House

Approximate Gross Internal Area = 1857 sq ft / 172.5 sq m
Balcony = 250 sq ft / 23.2 sq m

GARTON JONES
LONDON



This plan is not to scale and must be used as layout guidance only. All measurements and areas are approximate and should not be relied upon to provide accurate information. This plan must not be relied upon when making property valuations, design considerations or any other such relevant decisions. We accept no responsibility or liability (whether in contract, tort or otherwise) in relation to any loss whatsoever arising from or in connection with any use of this plan or the adequacy, accuracy or completeness of it or any information within it.



